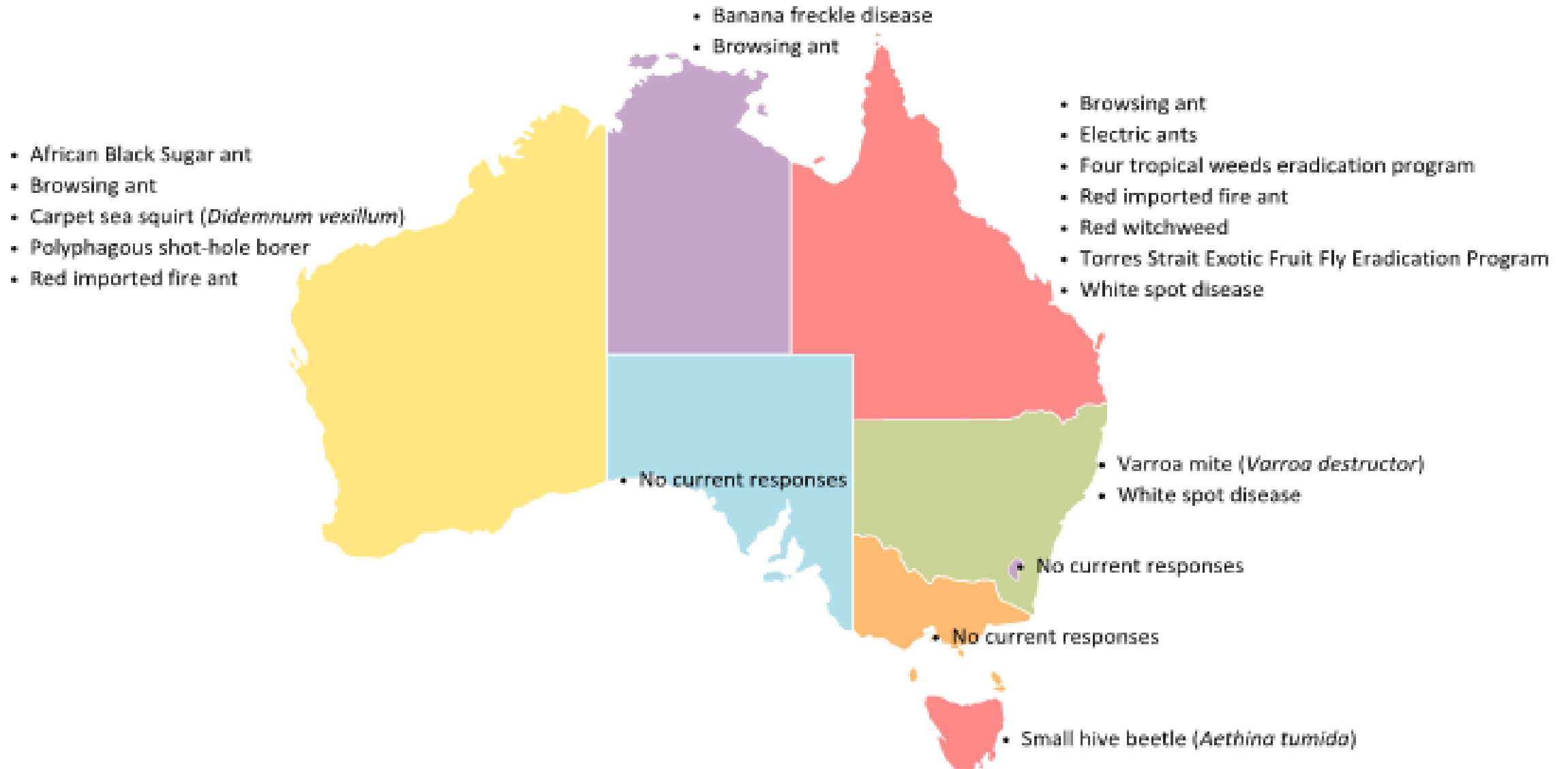
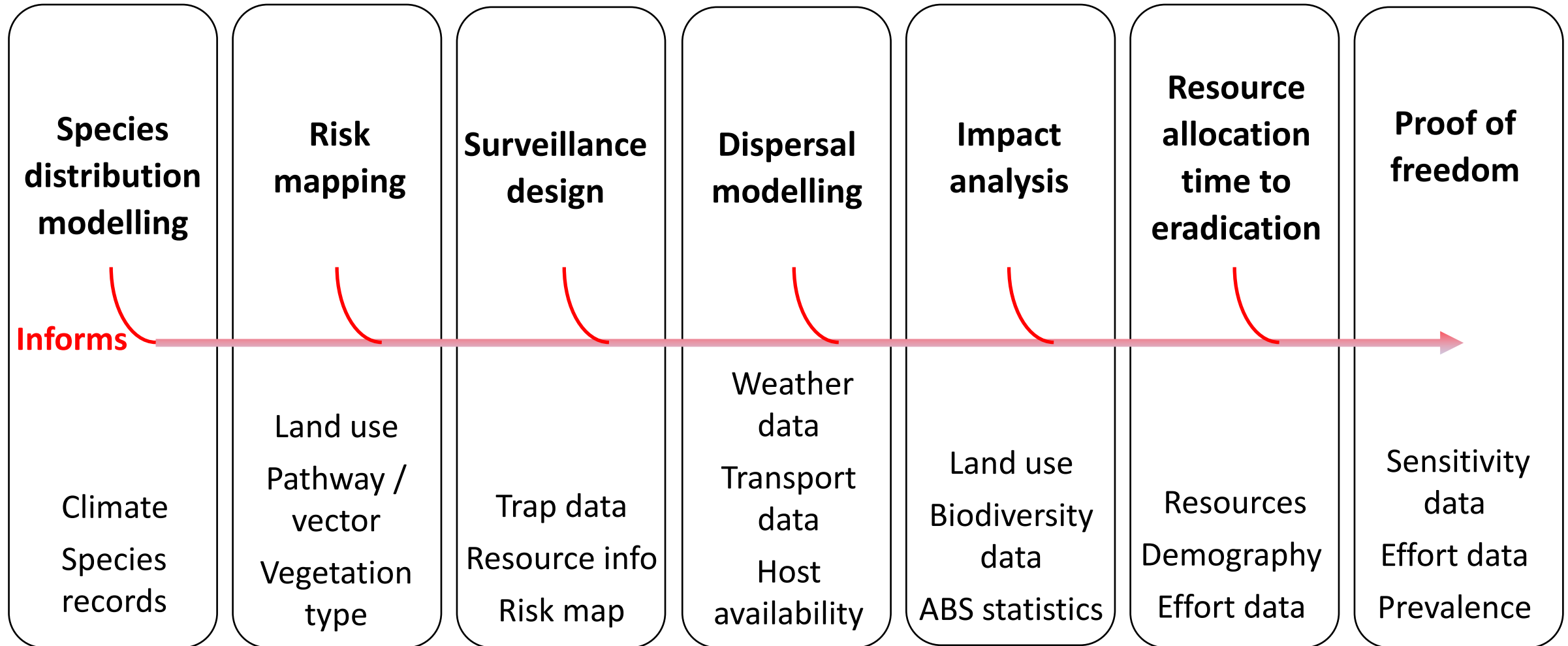


# Biosecurity risks and challenges: What's the Queensland context?

# Queensland: We're busy responding



# The post border environment



# What matters for post border?

More than 80,000 different pathways for threats to enter Australia



Almost 90% of border interceptions were insects, spiders and flowering plants



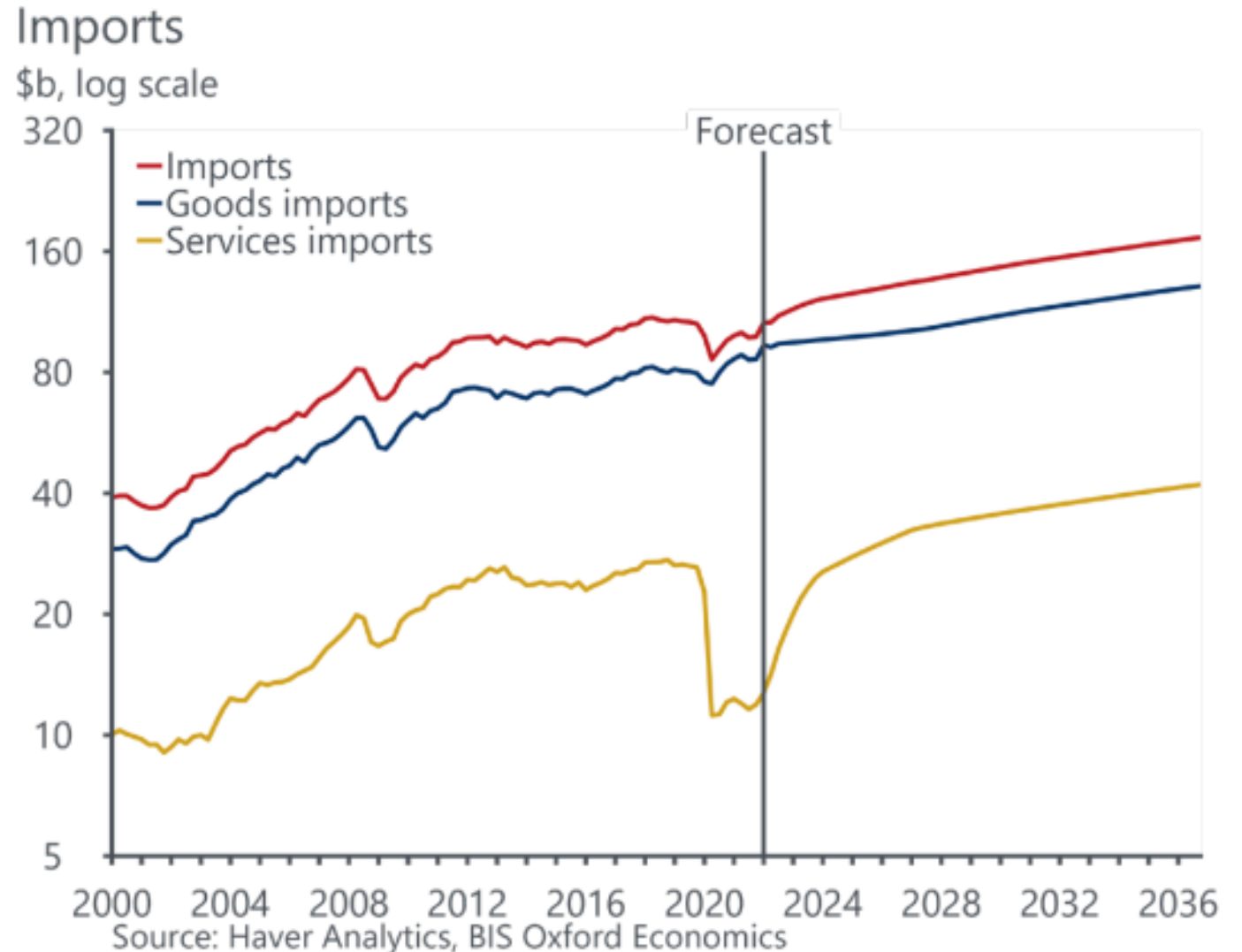
Environmental pathways & unregulated product movement through domestic tourism and trade is a risk



# Queensland trade

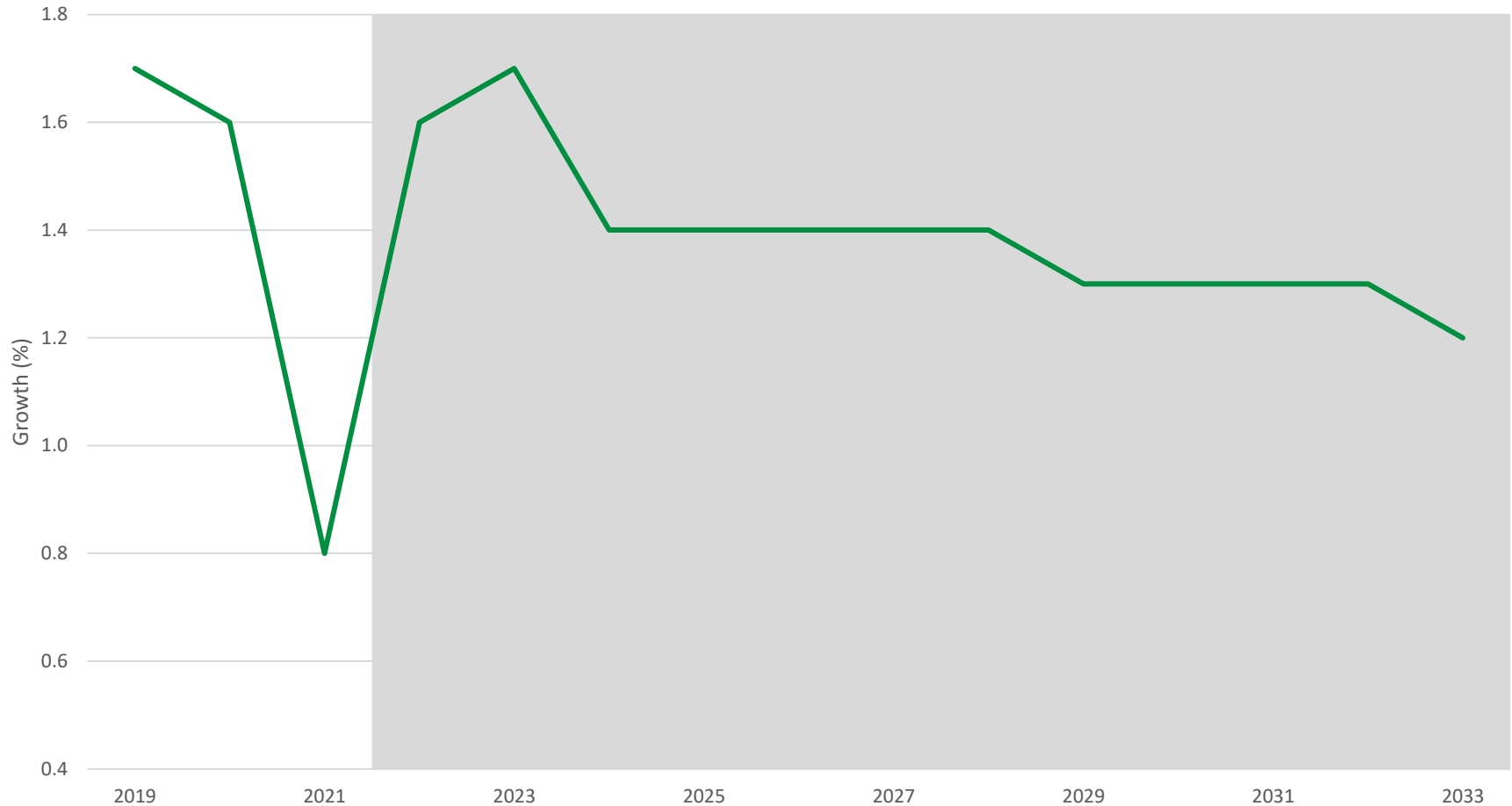
## Increasing biosecurity risks:

- Growth in imports
- Port expansions – spread of risk across the coast
- Building material risk
- Road transport growth – real time data opportunities



# Queensland's future population

QLD projected population growth (%)



Source: ABS, National state and territory populations, March 2022, 2022 and Centre for Population Projections

**6.01M by 2029**



# Queensland future tourism



Pre-COVID tourist numbers expected this year



Change in tourist profile (China)



International student mail parcels pose a risk



Threats from domestic tourism remain significant

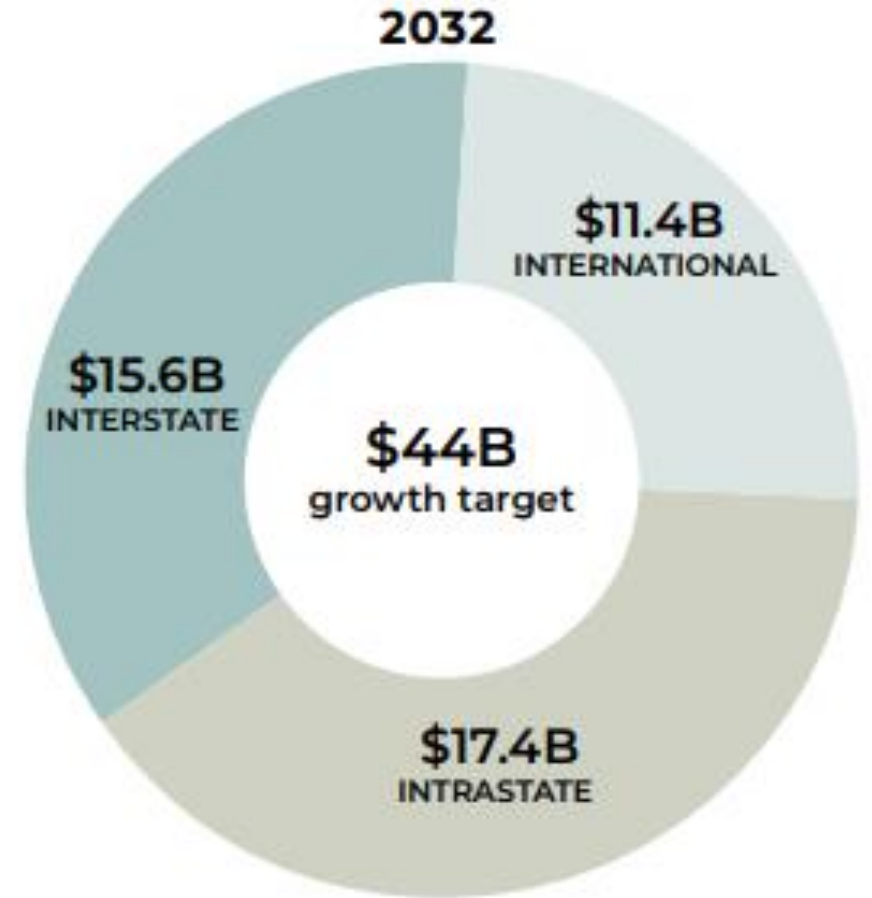


Cruising is projected to grow



Olympics in 2032

## QLD - Forecast expenditure by segment



# Future land use and climate?

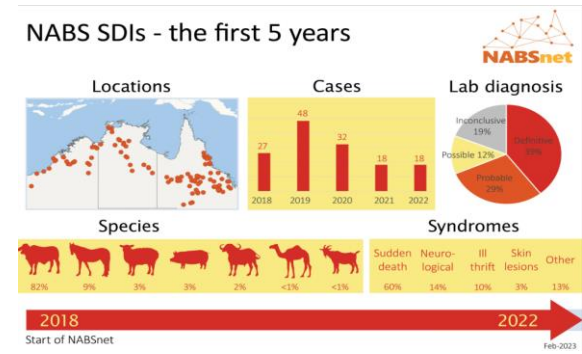
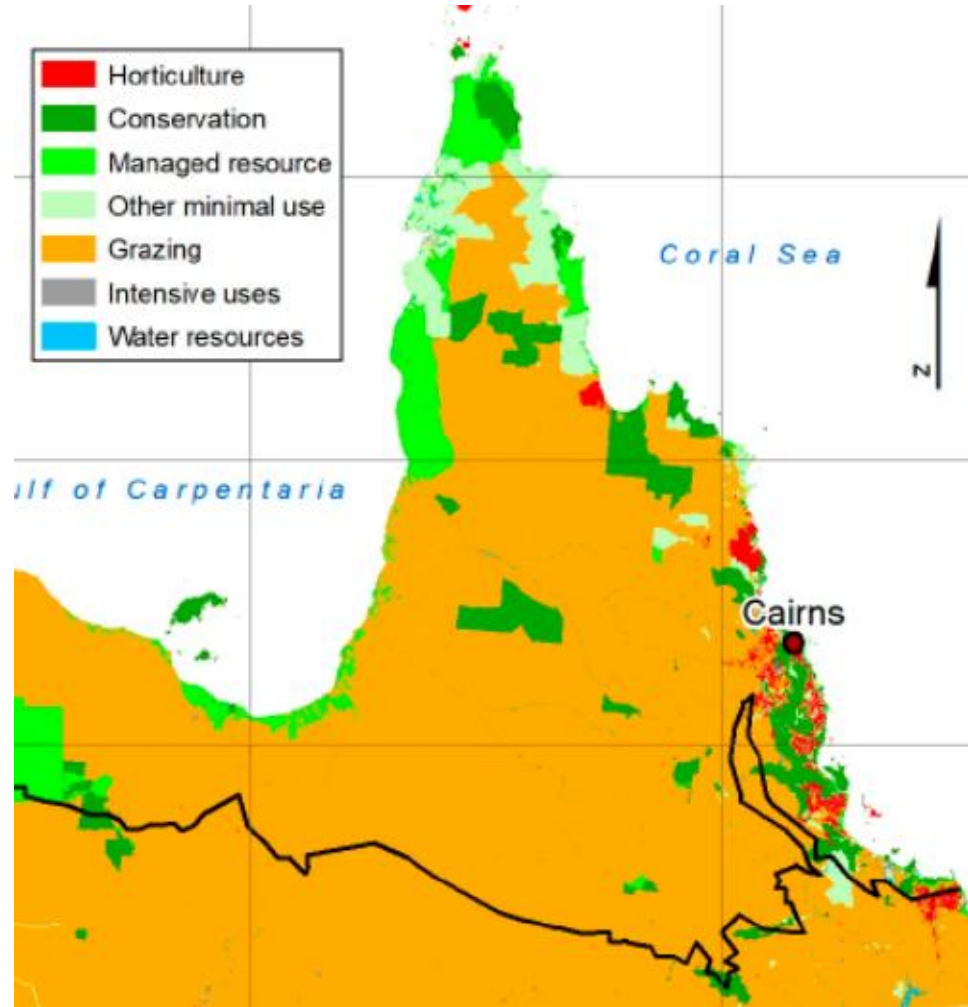
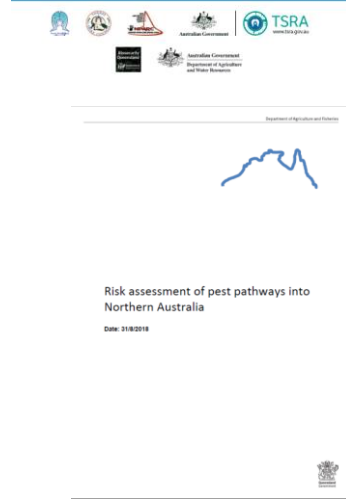
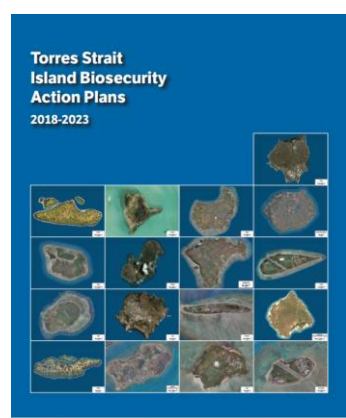
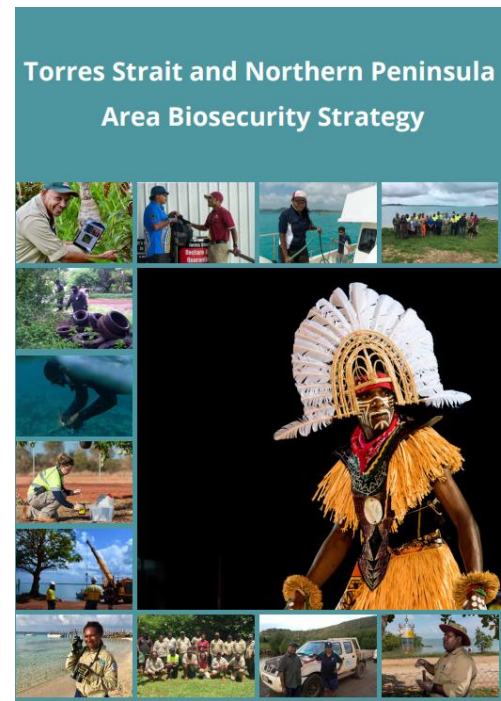
## Loss in Gross State Product to Australian jurisdictions due to climate change

	2020	2026	2033	2041	2051	2062	2074	2081	2095	2102
NT	-0.02	-1.00	-2.35	-4.12	-6.40	-8.39	-10.75	-12.29	-15.57	-17.25
QLD	-0.02	-0.99	-2.31	-4.06	-6.32	-8.29	-10.60	-12.12	-15.35	-17.02
NSW	-0.01	-0.56	-1.28	-2.23	-3.43	-4.49	-5.74	-6.55	-8.30	-9.19
WA	-0.01	-0.55	-1.32	-2.35	-3.63	-4.52	-5.51	-6.15	-7.53	-8.25
SA	-0.01	-0.47	-1.08	-1.89	-2.86	-3.59	-4.40	-4.89	-5.93	-6.46
ACT	0.00	-0.17	-0.38	-0.67	-1.05	-1.48	-2.06	-2.43	-3.23	-3.63
Vic	0.00	-0.20	-0.46	-0.80	-1.24	-1.67	-2.19	-2.52	-3.22	-3.58
Tas	0.00	-0.02	-0.06	-0.11	-0.20	-0.28	-0.36	-0.40	-0.51	-0.58





# Future of North Qld



Sanga et al An integrated Assessment of the Horticulture Sector in Northern Australia to Inform Future Development. Sustainability 2022, 14, 11647



Over to you...