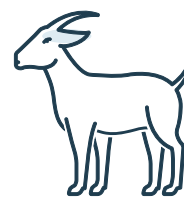




Movement of Harvested Rangeland

Goats in Queensland



Harvested rangeland goats are defined as goats that:

- have been captured from a wild state AND
- have not been born as a result of a managed breeding program AND
- have not been subjected to any animal husbandry procedure or treatment.

Harvested rangeland goats can be moved from property of capture to a registered goat depot or abattoir without an NLIS device if the following conditions are met.

If you have:

- | | | |
|----|---|---------|
| 01 | Goats meet the definition of HRG | Yes
 |
| 02 | Current biosecurity entity registration with associated PIC/s
http://bit.ly/4f6peau | |
| 03 | Obtain a Queensland Travel Approval for HRG | |
| 04 | LPA accreditation for HRG
https://bit.ly/3Yy1IMy | |
| 05 | LPA accreditation for goats
https://www.integritysystems.com.au/livestock-production-assurance/accreditation/ | |

Option

You have the option of moving harvested rangeland goats from the property of capture directly to an abattoir; or from the property of capture directly to an abattoir via one registered goat depot without an NLIS eID device.

Producers with LPA Goat accreditation are eligible to apply for LPA HRG accreditation.

During the application process, LPA will request approval from the relevant jurisdiction to grant HRG accreditation,

LPA will notify the producer to inform them of the outcome of their application.

If successful

If the application is successful, a HRG status will be assigned to the accredited PIC on the NLIS database. The producer will then be able to access HRG NVD waybills through their LPA account for device-free movements of harvested rangeland goats.

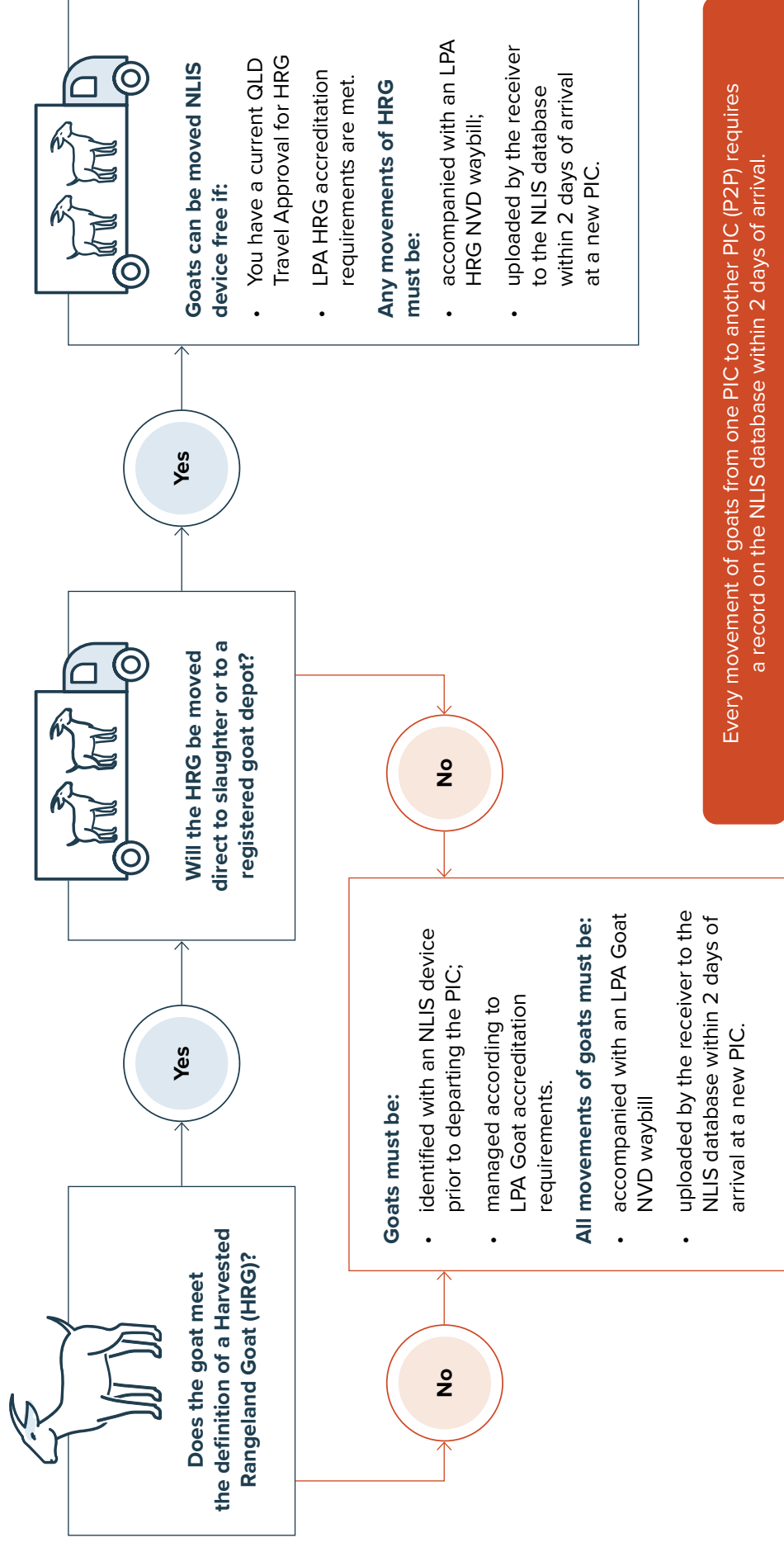
- In Queensland obtain a Travel Approval - Harvested Rangeland Goats (jurisdiction authorisation) and send this to LPA.
- A HRG accredited producer must agree to an LPA audit once every LPA accreditation cycle and keep all NVD waybills for 5 years.
- Using the eNVD option guarantees that you will automatically have access to the most current version of every NVD and provides electronic storage.

If you use the printed NVD waybill books, be aware that new versions for both Goats and Harvested Rangeland Goats will be introduced from 1 January 2025.

Any harvested rangeland goat **that does not meet the definition must be identified** with an approved NLIS electronic device prior to dispatch from the property.

Decision flowchart

for consigning harvested rangeland goats with and without an NLIS device



Every movement of goats from one PIC to another PIC (P2P) requires a record on the NLIS database within 2 days of arrival.